



Company profile



To whom it concerns,

Dear Sir/Madam,

We are pleased to introduce our company to you by means of attached summary of information.

Airpack Nederland B.V. is a Dutch based company active all over the world, especially in Europe, the Far- and Middle East. We are established in 1978 and have manufactured more than 5.000 packages, which are operating in the field. Besides manufacturing, we also have a special worldwide operating maintenance group.

Our activities are the manufacturing of:

- air and gas compressor packages,
- air and gas dryer packages,
- nitrogen generators,

We are not simply a supplier of equipment, which you have to assemble in the field for which skilled and expensive personnel is required. No, we make packages to your requirements, which you only have to hook up on your system. Only one push on the button and our package will work completely automatic.

No calibration of instruments or mounting of separate duty / standby compressor, dryer, auto control, annunciators and/or air receivers is required.

We design, manufacture and test all installations completely according to customers specifications and international high standards.

If you require any further information about our capabilities, experiences and facilities please do not hesitate to contact us.

Yours faithfully,
AIRPACK NEDERLAND B.V.

J.P. Warnar
General Manager

Table of contents

| | |
|--|----|
| 1. Scope of supply | 4 |
| 1.1. Air and gas compressor packages | 4 |
| 1.1.1. Lubricated piston compressor..... | 4 |
| 1.1.2. Non lubricated piston compressor | 5 |
| 1.1.3. Oil injected screw compressor..... | 6 |
| 1.1.4. Oil free screw compressor | 7 |
| 1.1.5. Booster compressors..... | 8 |
| 1.1.6. Centrifugal compressor..... | 8 |
| 1.2. Air and gas dryer packages..... | 9 |
| 1.2.1. Heatless regenerated dryer | 9 |
| 1.2.2. Heat regenerated dryer | 10 |
| 1.2.3. Refrigerated air dryer | 10 |
| 1.2.4. Membrane dryers | 10 |
| 1.3. Nitrogen generators..... | 11 |
| 1.3.1. Membrane nitrogen generator | 11 |
| 1.3.2. Nitrogen selection chart | 12 |
| 1.4. Combined packages..... | 13 |
| 2. Certificates and applicable standards | 14 |
| 3. Sub-suppliers & contractors..... | 16 |
| 3.1. Sub-suppliers | 16 |
| 3.2. Subcontractors | 21 |
| 4. Quality and assurance | 22 |
| 5. Site situation and transport facilities..... | 23 |
| 5.1. Seaworthy packing..... | 24 |
| 6. Organisation chart of Airpack Nederland B.V | 25 |

1. Scope of supply

1.1. Air and gas compressor packages

The air and gas compressor package consist of a complete skid mounted lubricated or oil free (non lubricated) compressor(s) of different types as stated in below tables.

The compressor(s) on the package will be driven via a coupling, gearbox or V-belt by an electric motor, diesel engine or turbine.

Accessories like oil- and aircoolers (forced by cooled air or water), oil- and waterpumps, oil- and air filters in duplex or single configuration in all possible constructions, pressure vessels, separators, pulsation dampers, control panels, PLC's, instruments, valves etc. can be applied in all materials, types and makes available on the market.

The available compressors types along with the details are mentioned in the below tables.

1.1.1. Lubricated piston compressor

| Model | Capacity [m ³ /hr] | Pressure [Bar(g)] | Number of Stages | Maximum compressor speed [rpm] | Cylinder Arrangement |
|---------------|-------------------------------|-------------------|------------------|--------------------------------|----------------------|
| LB-140 | 140 | 8 | 2 | 1500 | V-type |
| LB-230 | 234 | 8 | 2 | 1500 | V-type |
| LB-300 | 296 | 8 | 2 | 1500 | V-type |
| LB-400 | 396 | 8 | 2 | 1500 | V-type |
| LB-465 | 468 | 8 | 2 | 1500 | V-type |
| LB-600 | 594 | 8 | 2 | 1500 | V-type |
| MB-180 | 184 | 10 | 2 | 1000 | V-type |
| MB-230 | 222 | 10 | 2 | 1500 | V-type |
| MB-300 | 294 | 10 | 2 | 1000 | V-type |
| MB-375 | 368 | 10 | 2 | 1000 | V-type |
| MB-450 | 442 | 10 | 2 | 1000 | V-type |
| MB-600 | 603 | 10 | 2 | 1500 | V-type |
| HB-140 | 136 | 15 | 2 | 1000 | V-type |
| HB-230 | 204 | 15 | 2 | 1500 | V-type |
| HB-300 | 271 | 15 | 2 | 1000 | V-type |
| HB-400 | 406 | 15 | 2 | 1500 | V-type |

Special lubricated piston compressors can be offered on request.

1.1.2. Non lubricated piston compressor

| Model | Capacity [Nm ³ /hr] | Pressure [Bar(g)] | Number of Stages | Maximum compressor speed [rpm] | Cylinder Arrangement |
|--------|--------------------------------|-------------------|------------------|--------------------------------|----------------------|
| AL-20 | 20 | 8-15 | 2 | 750 | vertical |
| AL-65 | 65 | 8-15 | 2 | 750 | vertical |
| AL-115 | 115 | 8-15 | 2 | 750 | vertical |
| AL-135 | 135 | 8-15 | 2 | 750 | vertical |
| AL-175 | 175 | 8-15 | 2 | 750 | vertical |
| AL-235 | 235 | 8-15 | 2 | 750 | vertical |
| AL-270 | 270 | 8-15 | 2 | 750 | vertical |
| AL-320 | 320 | 8-15 | 2 | 750 | vertical |
| | | | | | |
| AP-115 | 135 | 8-15 | 2 | 1000/1500 | V-type |
| AP-130 | 235 | 8-15 | 2 | 1000/1500 | V-type |
| AP-195 | 295 | 8-15 | 2 | 1000/1500 | V-type |
| AP-390 | 390 | 8-15 | 2 | 1000/1500 | V-type |
| AP-515 | 515 | 8-15 | 2 | 1000/1500 | V-type |

| Model | Capacity [Nm ³ /hr] | Pressure [Bar(g)] | Number of Stages | Maximum compressor speed [rpm] | Cylinder Arrangement |
|--------------|--------------------------------|-------------------|------------------|--------------------------------|----------------------|
| HA-550-LT | 550 | 8-15 | 2 | 750 | horizontal |
| HA-800-LT | 800 | 8-15 | 2 | 750 | horizontal |
| HA-1060-LT | 1060 | 8-15 | 2 | 750 | horizontal |
| HA-1450-LT | 1450 | 8-13 | 2 | 750 | horizontal |
| HA-1865-LT | 1865 | 8-10 | 2 | 750 | horizontal |
| HA-2100-LT | 2100 | 8-10 | 2 | 750 | horizontal |
| HA-2700-LT | 2700 | 8-10 | 2 | 750 | horizontal |
| HA-5400-LT | 5400 | 8-10 | 2 | 750 | horizontal |
| | | | | | |
| HA-350-LT-3 | 350 | 18 | 3 | 750 | horizontal |
| HA-575-LT-3 | 575 | 18 | 3 | 750 | horizontal |
| HA-1550-LT-3 | 1550 | 18 | 3 | 750 | horizontal |
| HA-1800-LT-3 | 1800 | 18 | 3 | 750 | horizontal |

Special non lubricated piston compressors can be offered on request.

1.1.3. Oil injected screw compressor

| Model | Capacity [Nm ³ /hr] at working pressure | | | Cooling | Sound level [dB(A)] |
|-----------------|--|------|------|-------------|---------------------|
| | 8 | 10 | 13 | | |
| COMP-6 | 33 | 29 | 22 | Air | 70 |
| COMP-8 | 50 | 43 | 35 | Air | 72 |
| COMP-10 | 71 | 64 | 55 | Air | 72 |
| COMP-15 | 81 | 87 | 75 | Air | 74 |
| COMP-20 | 144 | 124 | 102 | Air | 76 |
| COMP-25 | 168 | 147 | 123 | Air | 76 |
| COMP-30 | 201 | 171 | 147 | Air | 76 |
| COMP-40 | 303 | 258 | 222 | Air | 76 |
| COMP-50 | 360 | 324 | 267 | Air | 76 |
| COMP-60 | 408 | 366 | 315 | Air | 76 |
| COMP-75 | 546 | 468 | 408 | Air | 76 |
| COMP-100 | 726 | 630 | 552 | Air | 76 |
| COMP-125 | 942 | 822 | 720 | Air | 76 |
| COMP-150 | 1104 | 978 | 852 | Air | 76 |
| COMP-180 | 1398 | 1248 | 1068 | Air | 76 |
| COMP-220 | 1674 | 1506 | 1302 | Air | 77 |
| COMP-270 | 1956 | 1740 | 1542 | Air | 77 |
| | | | | | |
| COMP-360 | 2350 | 1950 | - | Air & Water | 72 |
| COMP-400 | 2450 | 2250 | 1850 | Air & Water | 73 |
| COMP-460 | 2950 | 2550 | 2150 | Air & Water | 74 |
| COMP-520 | 3250 | 2850 | 2450 | Air & Water | 75 |
| COMP-575 | 3550 | 3150 | 2650 | Air & Water | 76 |

Special oil injected screw compressors can be offered on request.

1.1.4. Oil free screw compressor

| Model | Capacity [Nm ³ /hr] at working pressure | | Number Of Stages | Cooling | Sound level [dB(A)] |
|---------------------|--|------|------------------|-------------|---------------------|
| | 7,5 | 10 | | | |
| COMP-50-OF | 380 | 320 | 2 | Air & Water | 65 |
| COMP-75-OF | 475 | 405 | 2 | Air & Water | 65 |
| COMP-100-OF | 645 | 580 | 2 | Air & Water | 65 |
| COMP-125-OF | 780 | 695 | 2 | Air & Water | 65 |
| COMP-150-OF | 1020 | 840 | 2 | Air & Water | 66 |
| COMP-180-OF | 1182 | 1002 | 2 | Air & Water | 67 |
| COMP-200-OF | 1266 | 1074 | 2 | Air & Water | 67 |
| COMP-220-OF | 1512 | 1236 | 2 | Air & Water | 68 |
| COMP-275-OF | 1866 | 1614 | 2 | Air & Water | 69 |
| COMP-340-OF | 2352 | 2010 | 2 | Air & Water | 70 |
| COMP-400-OF | 2596 | 2304 | 2 | Water | 70 |
| COMP-500-OF | 3180 | 2832 | 2 | Water | 71 |
| COMP-550-OF | 3510 | 3144 | 2 | Water | 72 |
| COMP-600-OF | 4206 | 3504 | 2 | Water | 73 |
| COMP-700-OF | 4644 | 4002 | 2 | Water | 75 |
| COMP-850-OF | 5778 | 4932 | 2 | Water | 76 |
| COMP-1000-OF | 6948 | 5706 | 2 | Water | 76 |

Special oil free screw compressors can be offered on request.

1.1.5. Booster compressors

| Model | Capacity [Nm ³ /hr] | Suction pressure [Bar(a)] | Discharge Pressure [bar(g)] | Number of Stages | Cylinder Arrangement |
|-----------------|-----------------------------------|---------------------------------|-----------------------------------|------------------------|-------------------------|
| RBV-25 | 25 | 1 - 10 | 30 – 350 | 2 – 4 | V-type |
| RBV-45 | 45 | 1 - 10 | 30 – 350 | 2 – 4 | V-type |
| RBV-70 | 70 | 1 - 10 | 30 – 350 | 2 – 4 | V-type |
| RBV-120 | 120 | 1 - 10 | 30 – 350 | 2 – 4 | V-type |
| RBV-285 | 285 | 1 - 10 | 30 – 350 | 2 – 4 | V-type |
| | | | | | |
| RBH-250 | 250 | 1 – 50 | 30 – 400 | 2 - 4 | Horizontal |
| RBH-500 | 500 | 1 – 50 | 30 - 400 | 2 – 4 | Horizontal |
| RBH-750 | 750 | 1 – 50 | 30 – 400 | 2 – 4 | Horizontal |
| RBH-1000 | 1000 | 1 – 50 | 30 - 400 | 2 – 4 | Horizontal |
| RBH-1250 | 1250 | 1 – 50 | 30 – 400 | 2 – 4 | Horizontal |
| RBH-1500 | 1500 | 1 – 50 | 30 - 400 | 2 – 4 | Horizontal |
| RBH-2000 | 2000 | 1 – 50 | 30 – 400 | 2 – 4 | Horizontal |
| RBH-2500 | 2500 | 1 – 50 | 30 - 400 | 2 – 4 | Horizontal |
| RBH-3000 | 3000 | 1 - 50 | 30 - 400 | 2- 4 | Horizontal |
| RBH-3500 | 3500 | 1 – 50 | 30 – 400 | 2 – 4 | Horizontal |
| RBH-4500 | 4500 | 1 - 50 | 30 - 400 | 2 – 4 | Horizontal |

Special booster compressors can be offered on request.

1.1.6. Centrifugal compressor

Information can be provided on request.

1.2. Air and gas dryer packages

The air and gas dryer package consist of a complete skid mounted dryer of several types as stated in below tables. Each dryer will be designed according to its required dewpoint and the operating capacity, pressure and temperature.

Pressure dewpoints down to $-80\text{ }^{\circ}\text{C}$ can be obtained for regenerated dryers. Refrigerated dryer can achieve pressure dewpoints down to $3\text{ }^{\circ}\text{C}$.

Along with the dryer itself can all types of filters in single or duplex configuration, control panels, PLC's, instruments, valves etc. be applied in all materials, types and makes available in the market.

A complete air or gas dryer can along with its dedicated air or gas compressor be packaged together on a common skid.

The available dryer types along with the details are mentioned in the below tables.

1.2.1. Heatless regenerated dryer

Pressure dewpoints down to $-80\text{ }^{\circ}\text{C}$.

| Model | Capacity * Nm ³ /hr | Length mm | Width mm | Height Mm | Weight kg | Connection inch |
|-------------------|-----------------------------------|--------------|-------------|--------------|--------------|--------------------|
| SFN – 25 | 25 | 690 | 300 | 1020 | 60 | 1/2 |
| SFN – 70 | 70 | 690 | 300 | 1020 | 135 | 3/4 |
| SFN – 150 | 150 | 940 | 610 | 2040 | 200 | 1 |
| SFN – 250 | 250 | 1085 | 700 | 2250 | 350 | 1 1/2 |
| SFN – 400 | 400 | 1200 | 700 | 2350 | 450 | 1 1/2 |
| SFN – 600 | 600 | 1335 | 840 | 2700 | 710 | 2 |
| SFN – 900 | 900 | 1720 | 950 | 3000 | 1250 | 3 |
| SFN – 1200 | 1200 | 2000 | 1100 | 3050 | 1500 | 3 |
| SFN – 1500 | 1500 | 2275 | 1220 | 3100 | 1800 | 3 |
| SFN – 2000 | 2000 | 2450 | 1415 | 3300 | 2600 | 4 |
| SFN – 3000 | 3000 | 2750 | 1625 | 3400 | 3300 | 4 |
| SFN - 4000 | 4000 | 3300 | 1950 | 3700 | 5000 | 6 |

**Based on inlet pressure of 7 bar and inlet temperature of 35 °C.*

Special heatless regenerated dryers can be offered on request.

1.2.2. Heat regenerated dryer

Pressure dewpoints down to $-80\text{ }^{\circ}\text{C}$.

| Model | Capacity * Nm ³ /hr | Length mm | Width Mm | Height mm | Weight kg | Connection inch |
|-------------------|-----------------------------------|--------------|-------------|--------------|--------------|--------------------|
| HFN – 100 | 100 | 690 | 300 | 1190 | 135 | ½ |
| HFN – 150 | 150 | 940 | 610 | 1810 | 360 | 1 |
| HFN – 250 | 250 | 1085 | 700 | 2250 | 550 | 1½ |
| HFN – 400 | 400 | 1350 | 750 | 2350 | 670 | 1½ |
| HFN – 600 | 600 | 1500 | 840 | 2700 | 950 | 2 |
| HFN – 900 | 900 | 1720 | 950 | 2800 | 1530 | 3 |
| HFN – 1200 | 1200 | 2000 | 1100 | 2975 | 1800 | 3 |
| HFN – 1500 | 1500 | 2275 | 1220 | 3200 | 2100 | 3 |
| HFN – 2000 | 2000 | 2450 | 1415 | 3450 | 3000 | 4 |
| HFN – 3000 | 3000 | 2750 | 1625 | 3550 | 3800 | 4 |
| HFN - 4000 | 4000 | 3300 | 1950 | 3850 | 5700 | 6 |

*Based on inlet pressure of 7 bar and inlet temperature of $35\text{ }^{\circ}\text{C}$.

Special heat regenerated dryers can be offered on request.

1.2.3. Refrigerated air dryer

Pressure dewpoints down to $3\text{ }^{\circ}\text{C}$.

| Model | Capacity * Nm ³ /hr | Length mm | Width Mm | Height mm | Weight kg | Connection inch |
|-----------------|-----------------------------------|--------------|-------------|--------------|--------------|--------------------|
| ESC-30 | 30 | 600 | 450 | 550 | 35 | ½ |
| ESC-60 | 60 | 600 | 450 | 550 | 40 | ½ |
| ESC-90 | 90 | 600 | 450 | 550 | 45 | 1 |
| ESC-180 | 180 | 650 | 650 | 800 | 55 | ¾ |
| ESC-240 | 240 | 900 | 650 | 800 | 70 | 1 |
| ESC-480 | 480 | 900 | 650 | 800 | 95 | 1½ |
| ESC-720 | 720 | 900 | 800 | 1200 | 175 | 2 |
| ESC-1100 | 1100 | 900 | 800 | 1200 | 180 | 2 |
| ESC-1750 | 1750 | 900 | 800 | 1200 | 200 | 3 |
| ESC-2500 | 2500 | 1200 | 1200 | 1900 | 430 | 3 |
| ESC-4500 | 4500 | 1200 | 1200 | 1900 | 650 | 4 |

*Based on inlet pressure of 7 bar, inlet temperature of $35\text{ }^{\circ}\text{C}$ and an ambient temperature of $25\text{ }^{\circ}\text{C}$.

Special refrigerated dryers can be offered on request.

1.2.4. Membrane dryers

Information can be provided on request.

1.3. Nitrogen generators

Nitrogen generators separate compressed air in a product stream of nitrogen and a (waste) stream of enriched air. The waste stream will be vented to the atmosphere, while the nitrogen is directed to the system.

Nitrogen is most often used as a safety gas to avoid hazardous situations, i.e. fire or explosion and often applied in a gas environment. Applications are purging, blanketing, inerting or preservation.

The hollow fibre membrane nitrogen generator package can consist of a complete skid mounted unit with membrane separator modules, all types of filters in single or duplex configuration, heater, control panels, PLC's, instruments, valves etc. All these components can be applied in the different materials, types and makes available in the market.

1.3.1. Membrane nitrogen generator

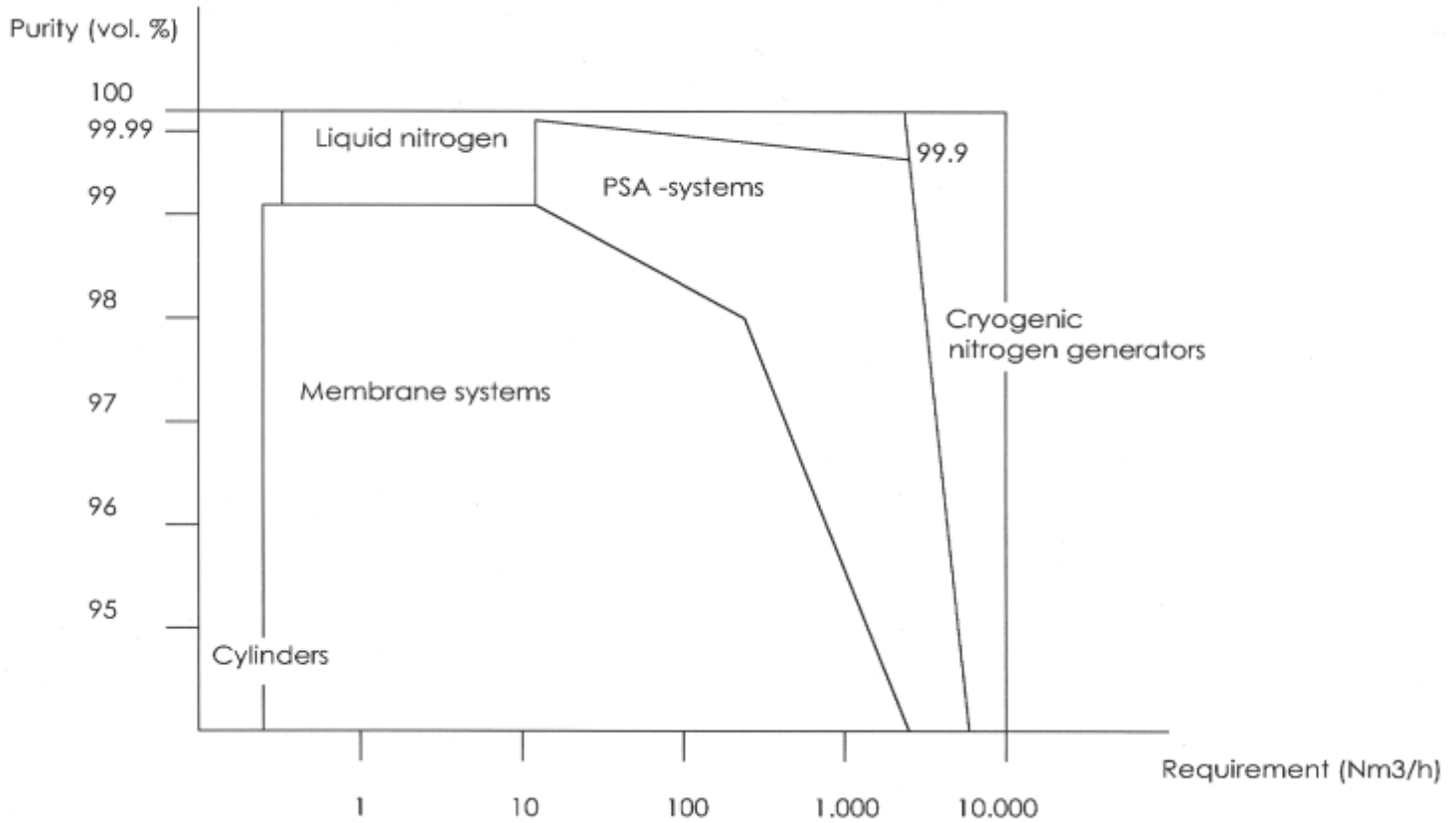
| Model | Nitrogen capacity @ 95% N ₂ purity [Nm ³ /hr] | Nitrogen purity range [%] | Pressure range [barg] | Temperature range [° C] |
|-----------------|---|---------------------------------|--------------------------|-------------------------------|
| NIV-4 | 4 | 90 – 99,9 | 5 – 13 | 5 – 50 |
| NIV-7 | 7 | 90 – 99,9 | 5 – 13 | 5 – 50 |
| NIV-11 | 11 | 90 – 99,9 | 5 – 13 | 5 – 50 |
| NIV-15 | 15 | 90 – 99,9 | 5 – 13 | 5 – 50 |
| NIV-25 | 25 | 90 – 99,9 | 5 – 13 | 5 – 50 |
| NIV-37 | 37 | 90 – 99,9 | 5 – 13 | 5 – 50 |
| NIV-60 | 60 | 90 – 99,9 | 5 – 13 | 5 – 50 |
| NIV-100 | 100 | 90 – 99,9 | 5 – 13 | 5 – 50 |
| NIV-150 | 150 | 90 – 99,9 | 5 – 13 | 5 – 50 |
| NIV-250 | 250 | 90 – 99 | 5 – 13 | 5 – 50 |
| NIV-500 | 500 | 90 – 99 | 5 – 13 | 5 – 50 |
| NIV-750 | 750 | 90 – 98 | 5 – 13 | 5 – 50 |
| NIV-1500 | 1500 | 90 – 98 | 5 – 13 | 5 – 50 |
| NIV-2000 | 2000 | 90 – 98 | 5 – 13 | 5 – 50 |

Special membrane nitrogen generators can be offered on request.

Each nitrogen generator, will be designed according to its required nitrogen purity and the operating capacity, pressure and temperature. A nitrogen generator can be packaged on a common skid, together with its dryer and compressor. Please see 1.5.

1.3.2. Nitrogen selection chart

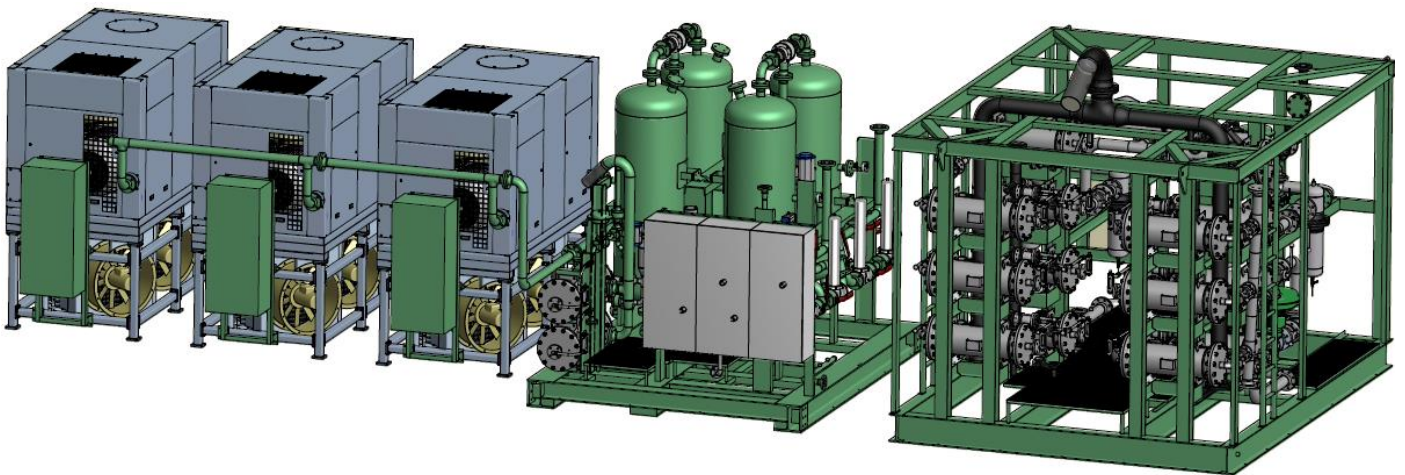
The membrane technology is improving day by day. Nowadays even 99.9% nitrogen purity can be achieved. Below chart gives the wide application range where membrane technology can be used.



1.4. Combined packages

With all the advantages being an independent package manufacture we are able to select the best compressor, dryer and nitrogen generator. By merging all three equipments on a single skid following advantages can be achieved:

1. Single point for warranty and overall support,
2. Single point document supply and control,
3. Single shipment and custom clearance,
4. Single commissioning & start-up,
5. Optimized interface within the skid,
6. Weight savings,
7. Space savings.



2. Certificates and applicable standards

Airpack can design according to different international high standards as for instance:

- AD Merkblatter
- Airpack Welding Specification
- A.S.M.E. section VIII
- British Standard
- Bureau Veritas
- Det Norske Veritas
- Lloyds Register of Shipping
- Service de Mines
- T.U.V.

Airpack also works according to many API standards, such as:

- API 618
- API 619
- API 680
- API 614
- API 670

Airpack is also familiar with special specifications of Oil Company Materials Associations (OCMA), National Fire Protection Association (NFPA) and many other specifications of particular clients:

| | |
|---------------------------------|----------------------|
| - ABB Lummus Crest | Voorburg (NL) |
| - ADNOC | United Arab Emirates |
| - Agiba | Egypt |
| - Amoco | The Hague (NL) |
| - Badger | The Hague (NL) |
| - BP | Great Britain |
| - D.S.M. | Geleen (NL) |
| - Exxon Mobil | U.S.A. |
| - Fluor Daniel | Haarlem (NL) |
| - Foster Wheeler | Great Britain |
| - I.P.S | Iran |
| - JGC Corporation | Japan |
| - Jordan Petroleum Co. | Jordan |
| - Korea Fine Chemical Co. | Korea South |
| - K.T.I. | Zoetermeer (NL) |
| - Kuwait Oil Company | Kuwait |
| - Mann | Germany |
| - Mannesmann | Germany |
| - Medoil | Germany |
| - Mitsui Eng. & Shipbuilding | Japan |
| - Mobil | Denmark |
| - NAM | Assen (NL) |
| - N.I.G.C. | Iran |
| - N.I.O.C. | Iran |
| - N.N.P.C. | Nigeria |
| - NPC | Iran |
| - Occidental | Qatar / U.S.A. |
| - ONGC | India |
| - Pakistan State Oil Company | Pakistan |
| - PIDEK | Iran |
| - Qatar General Petroleum Co. | Qatar |
| - Saudi Aramco | Saudi Arabia |
| - Shell | Worldwide |
| - Stork Engineers & Contractors | Schiedam (NL) |
| - Sucrieries | Egypt |
| - Technip | France |
| - Total | Worldwide |
| - UCN | The Netherlands |
| - Umm Al Jawaby | Libya |

3. Sub-suppliers & contractors

3.1. Sub-suppliers

Our main suppliers of material are mentioned underneath.

| Type of material | Make |
|---------------------------|--|
| Bare compressor block | Aerzen Neuman & Esser MANN Boge Compair Ingersoll-Rand Ariel C-Air Atlas Copco Mehrer Eco Sull-air Bauer Käser Gardner Denver Creemers Sperry Puska Köhler & Hörter LMF |
| Cable | Incore cables Batt Cables Kenwill / Rexel TKF |
| Cable gland | CMP Hawke |
| Check valve | Hoerbiger Ondastop Swagelok |
| Chillers | SD Schimonek GEA Hitema Donaldson Gunter MTA |
| Constructions/ components | ITM Meeuwsen BV Labruejere Verlascon Kryer Metaalwerken |

| Type of material | Make |
|-------------------------|--|
| Coolers | TES TT-Coil NRG-HECO Oversluizen Hyros Warmtetransport |
| Couplings | FPT Vector Stemin John Crane PIV Benelux Imthorn Thomas Rexnord TB Woods |
| Dewpoint analyzer | General Eastern Shaw |
| Diesel engine | Cummins Caterpillar Deutz Perkins Detroit John Deere Lister Petter |
| Display | Carlo gavazzi Newport Omega |
| Electric Motors | Siemens Schorch ABB Loher Dutchi Leroy Somer AEG VEM Rotor Weg F & G |
| Fans | Almeco |
| Filters (pre, after) | Ultrafilter/Quality Air Beko Zander Domnick-Hunter Hyros |
| Filters (air intake) | Donaldson Sollberg |
| Filters (oil) | MAN Mahle |

| Type of material | Make |
|------------------------------------|--|
| Flexible hose & compensators | Vadeb-Witzeman Hydrasun Beukers & Jeurling Geeve Econosto Eriks |
| Flow / level gauge | Krohne |
| Flow / level switches/transmitters | Krohne |
| Flow gauge | Alaxa Products |
| Gas engines | Caterpillar Waukesha Dresser |
| Gaskets | Hertel Walker Hofland-Econosto |
| Gauges (pressure / temperature) | Wika Afriso Baumer Ashcroft |
| Grating | Thielco Arco |
| Heaters | Heatex ASB Toronto Sesco |
| Industrial doors | EMS |
| Level switch/transmitters | Magnetrol KSR Keubler |
| Motor starters | Siemens Telemecanique |
| Nitrogen membranes | Airliquide UBE Parker aquilo |
| Oxygen analyser | Crowcon |
| Paint | Jotun Sigma |
| Panel | Fondisonzo Hawa Index electro Rittal Bartec Abtech |
| Piping & Fittings | HO Bergen Dylan staal Lubeck Combori/Borstlap |
| PLC and PLC Display | Siemens Yokogawa Allen Bradley Hima |
| Pressure reducer | Mankenberg |

| Type of material | Make |
|--|--|
| PSA Systems | Carbotech Italfilo |
| Pumps | Lowara Travaini |
| Refrigerated dryer | Sabroe Boge Atlas Beko Zander SD Schimonek |
| Relais/terminals | Phoenix contact |
| Roofplates | Nautracom Finish Products |
| Safety valves | Dresser Niezgodka Farris Laser Sarasin Crosby Tyco Anderson Greenwood |
| Separators | Ultrafilter Hyros Quality air |
| Solenoid | ASCO Bürkert |
| Steel profiles & plates | Konings staal Montan staal Staalunie Sloestaal ZSB Constructie |
| Switches (pressure / temperature) | Beta United Electric Wika Delta controls Ashcroft SOR |
| Taperlock & pulleys | FPT Vector Imthorn |
| Transmitters (pressure / temperature) | Emerson Foxboro Wika Smar ABB Siemens Yokogawa |

| Type of material | Make |
|-------------------------|--|
| Tubing & connectors | Hylock A-lok Swagelock Hydroflex Thermosan |
| Valves | Pekos PBV Ceti Alfa Vavole Dafram Kitz Econ Adler Hawa valves Fisher Star line |
| Vessels | NRG-HERCO Hollestelle Rootselaar SKS Troost |
| Vessels U-stamped | Crome |
| Vibration dampers | Trelleborg Polson Eriks Econosto |
| Vibration switch | FFE SPM Instruments |

3.2. Subcontractors

Because of our sophisticated network in the Netherlands with our subsuppliers (all ISO 9001 screened) we are able to handle relatively large orders. Sufficient construction area is available in our factory in Zierikzee to handle large and heavy frames. Our engineering department has the CAD system potential to design complicated and large packages.

Construction:

- Beijje
- Engiplast
- ITM
- Labrujere Staalbouw
- Meeuwsen
- PEC
- TMS
- VDS

Shotblasting, painting:

- Boone
- C.A. Geuze
- Kamps
- Van Jeveren

4. Quality and assurance

For details we refer to our quality control and quality assurance books I, II, III and IV.

N.D.T. equipment:

- | | |
|----------------------------|-------------------------------|
| - X-ray unit | by subcontractor (RTD or SGS) |
| - Gamma ray unit | by subcontractor (RTD or SGS) |
| - Dye penetrant | available |
| - Magnetic particle | by subcontractor (RTD or SGS) |
| - Leak detection-available | available |
| - Ultra-sonic equipment | by subcontractor (RTD or SGS) |

Equipment for:

- | | |
|----------------------|-------------------------------|
| - Particle test | available |
| - Hydrostatic test | available |
| - Dye penetrant test | available |
| - Ultra sonic | by subcontractor (RTD or SGS) |

Equipment for:

- | | |
|----------------|------------------|
| - Tensile test | by subcontractor |
| - Impact test | Scheldelab |
| - Micro test | Scheldelab |

Equipment for:

- | | |
|---------------------|-------------------------------|
| - X-ray | by subcontractor (RTD or SGS) |
| - Gamma ray | by subcontractor (RTD or SGS) |
| - Magnetic particle | by subcontractor (RTD or SGS) |

5. Site situation and transport facilities

Airpack is located in the South-West of The Netherlands in Zierikzee. Its location is ideal, at a short distance from the sea harbours of Antwerp, Flushing and Rotterdam. The site has direct access to all kinds of transportation.

Office:

Since 2005 the total office surface is 2000 m².

Workshops:

Since 2005 the total workshop surface is 3700 m².

W23: 792 m²

W24: 960 m²

W25: 660 m²

W19: 1.365 m²

Transportation:

Road near to the international high-way system

Water barge point Zierikzee 500 m.

Distance to seaports (ocean lines)

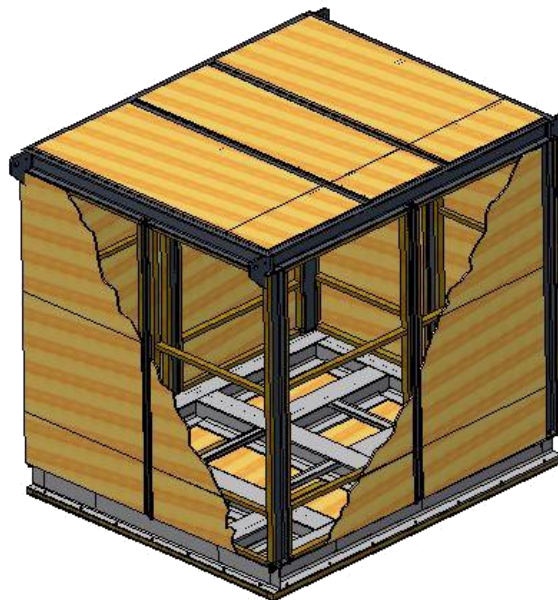
- Antwerp 70 km
- Flushing 35 km
- Rotterdam 70 km

For transportation by vessel our packages can be provided with a seaworthy packing as described on the next page.

5.1. Seaworthy packing

Seaworthy packing generally complies with our drawing TDMW - 103 as per enclosed. It consists of a removable packing frame of steel covered with underlayment 19 mm thick with wooden support of 2 x 3 inch beams.

Each critical item will be protected by a separate plastic cover. Switchbox will be filled with desiccant to avoid oxidation. The closed system will be filled with glycol for anti-oxidation and freezing during transport.



6. Organisation chart of Airpack Nederland B.V.

